

The South Carolina Education Lottery

Presentation to

House of Representatives

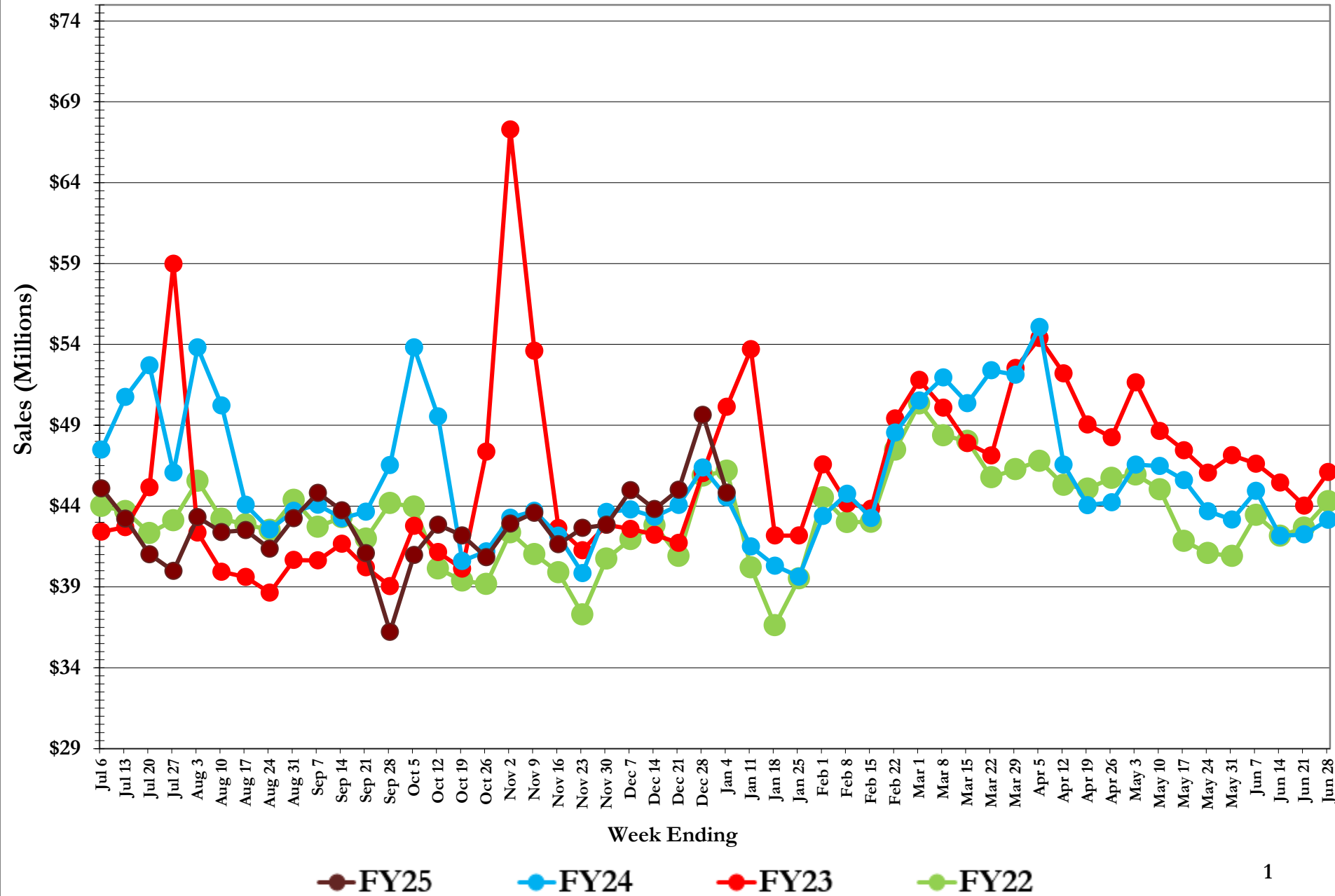
Ways & Means

Constitutional Budget Subcommittee

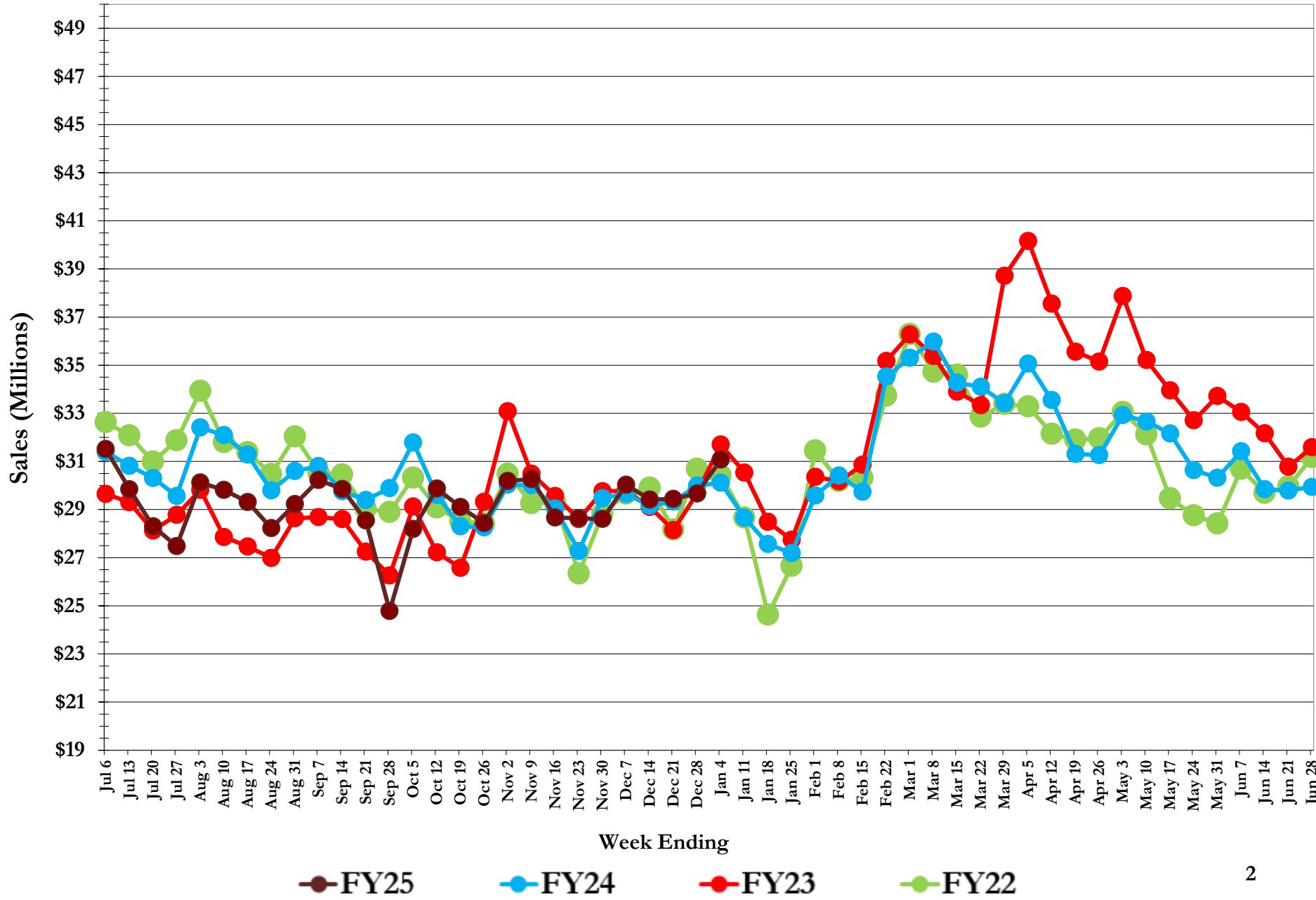
January 14, 2025



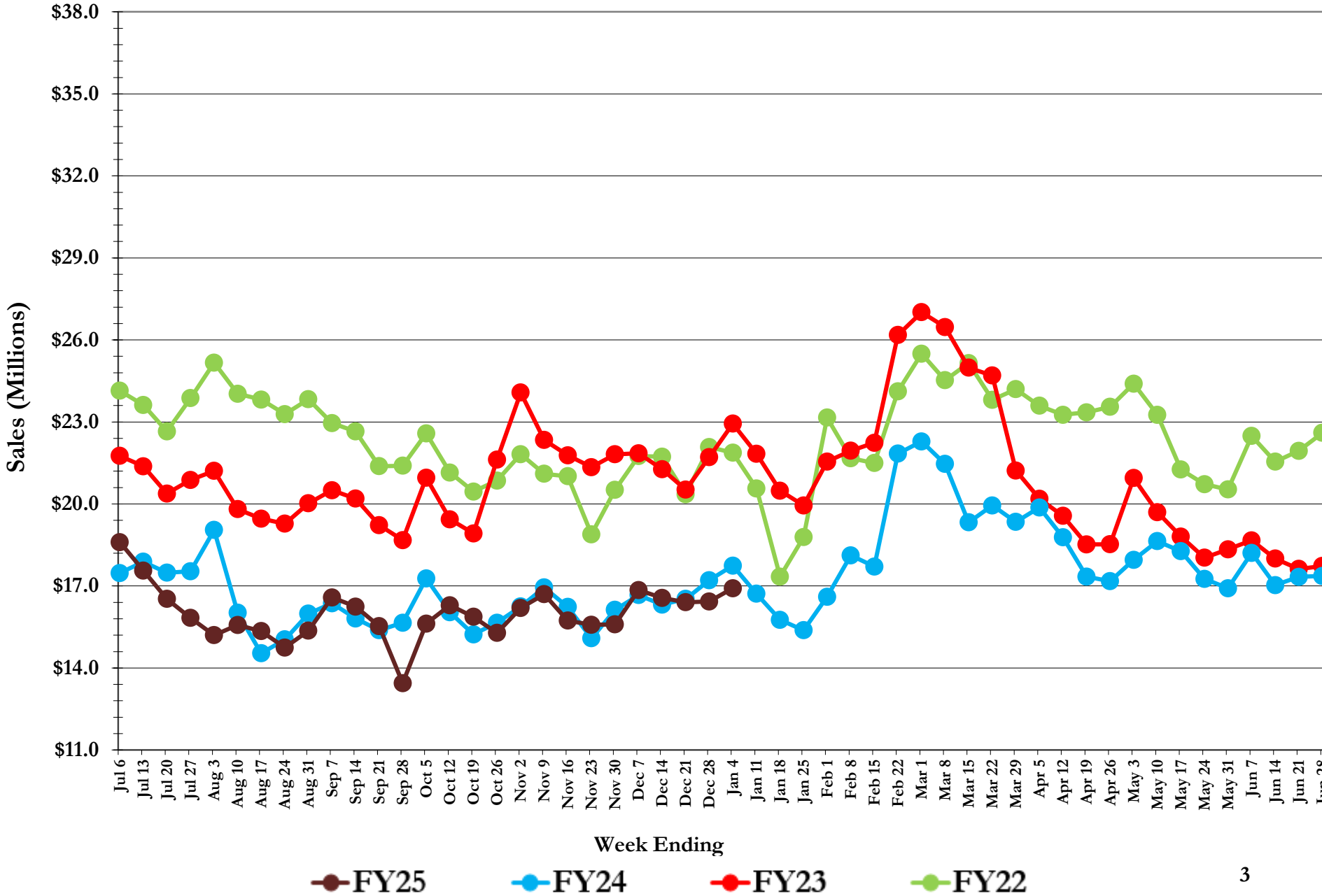
Total Weekly Sales



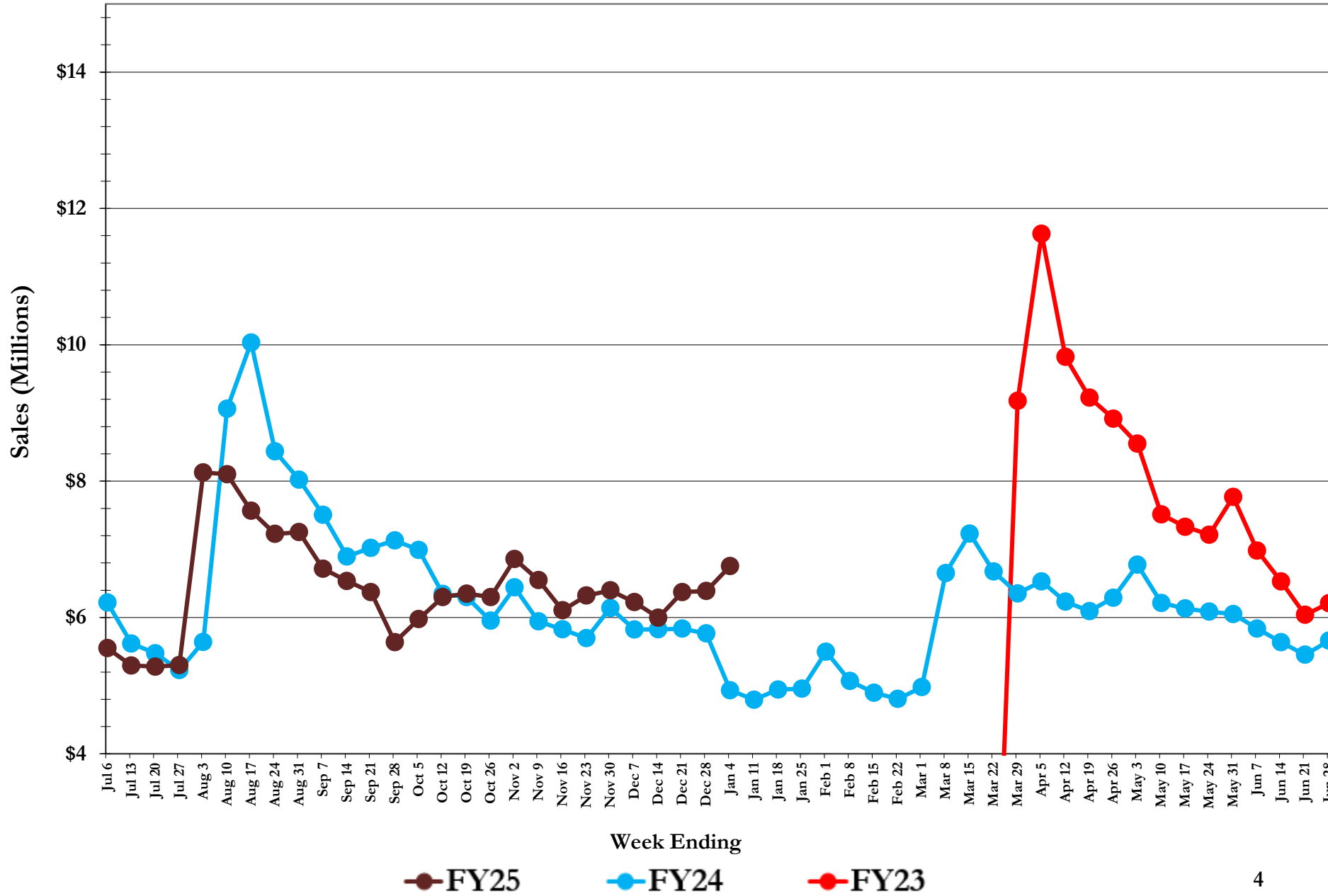
Instant Game (scratch-off) Weekly Sales



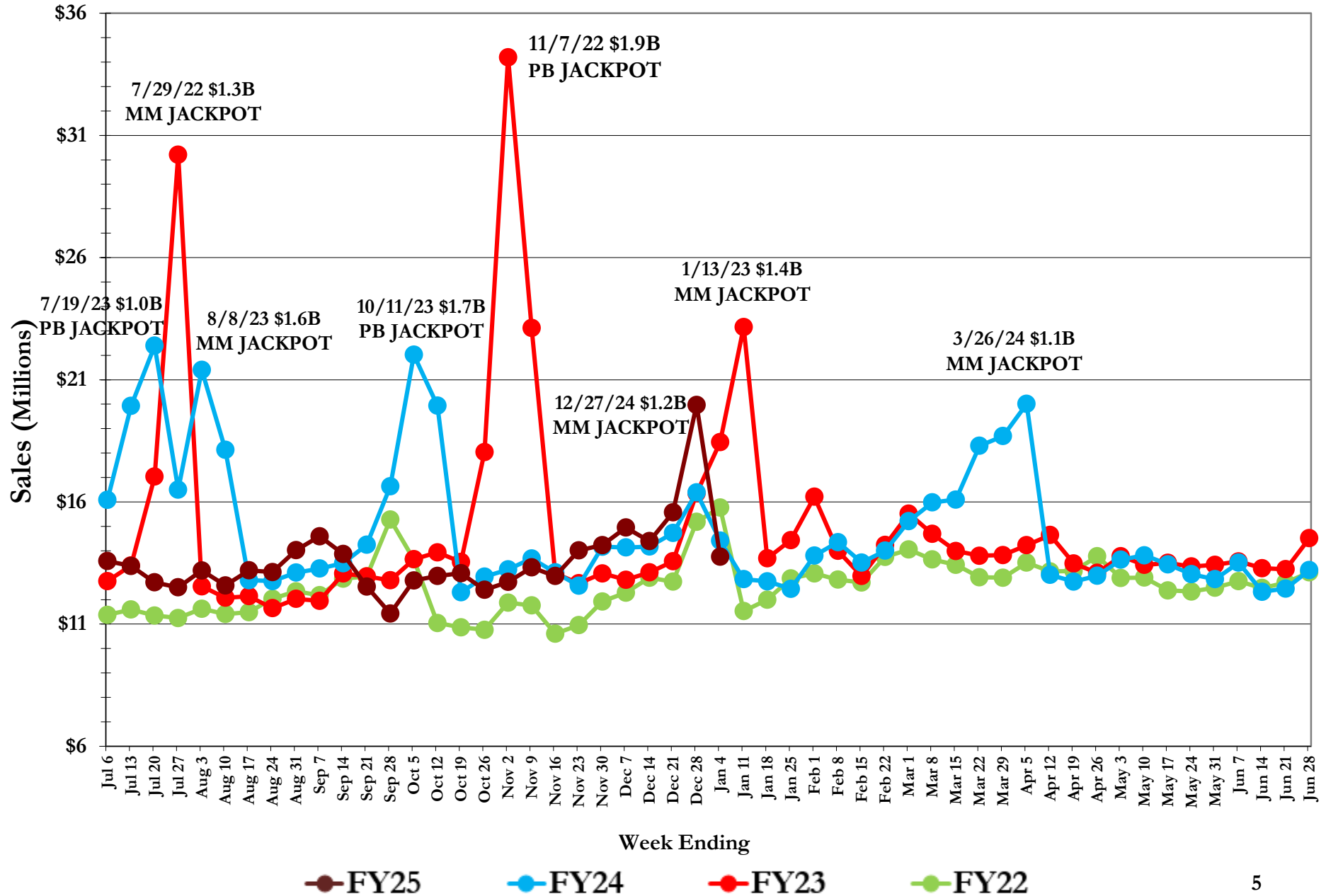
\$10 Instant Games Weekly Sales



\$20 Instant Games Weekly Sales



Terminal Game Weekly Sales



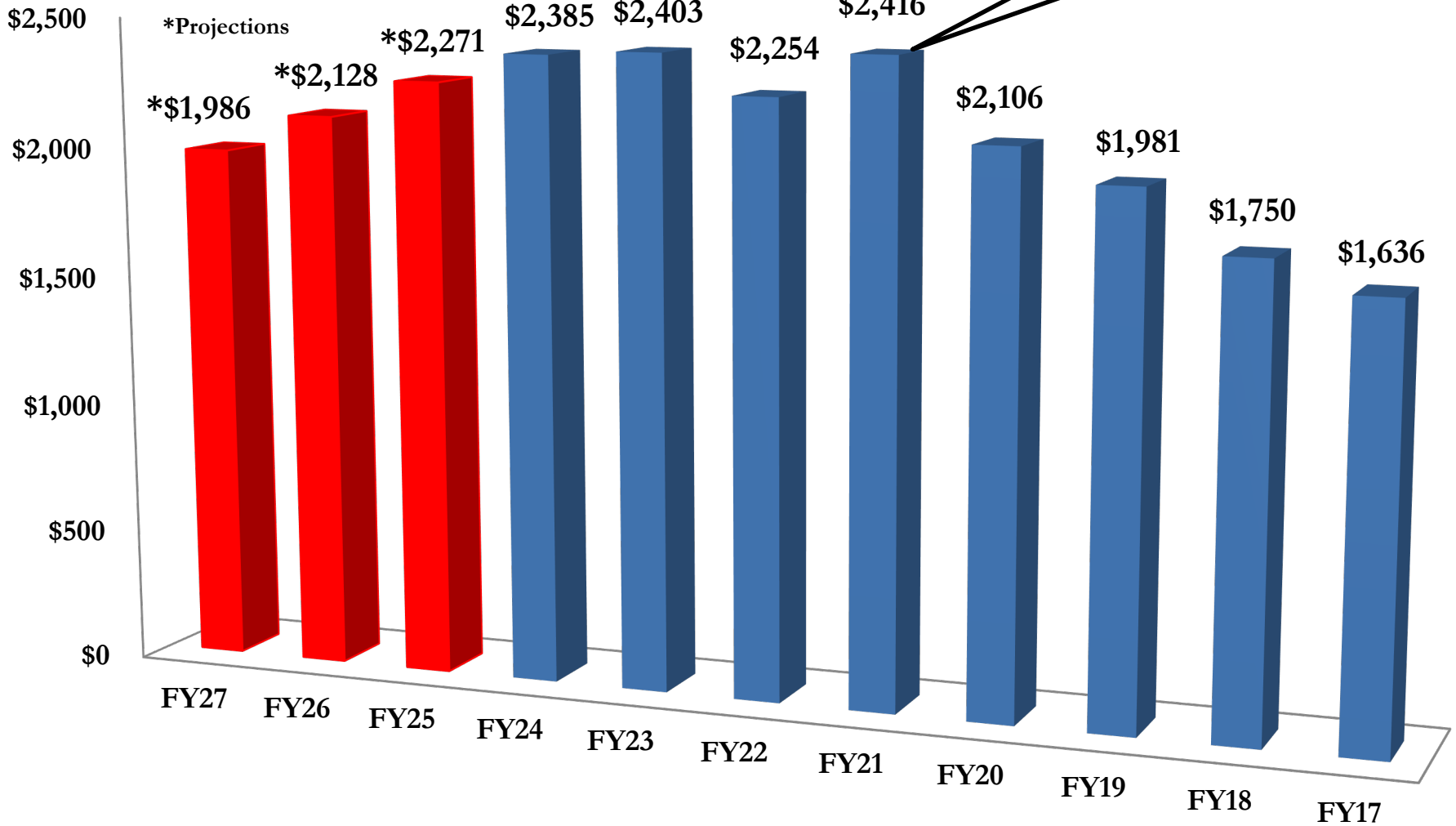
South Carolina Education Lottery

Total Sales FY 2017 - 2027

(Amounts in Millions)

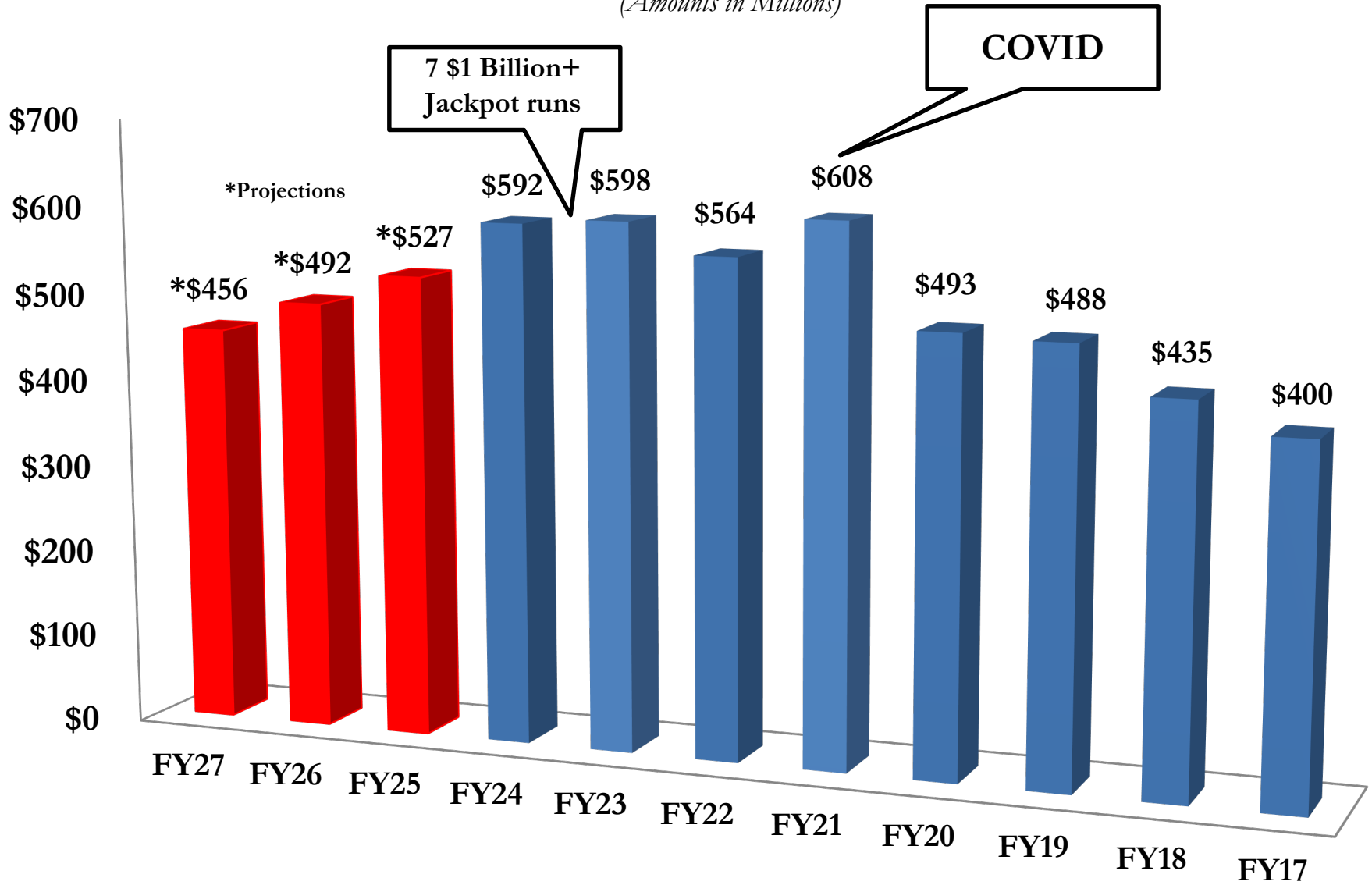
7 \$1 Billion+
Jackpot runs

COVID



South Carolina Education Lottery Transfers (Net Proceeds) FY 2017 - 2027

(Amounts in Millions)



Debit Card Potential Impact

- The introduction of debit cards could potentially add an estimated **\$187 million** in new, annual revenue and an additional **\$52 million** in transfers to education